



OCEANREEF®  
underwater, naturally.

diving | 2022

WE WERE ALL BORN FROM THE SEA.  
Maybe that's why we're so irresistibly  
attracted to it.

As soon as we're immersed in it,  
once again we turn to breathe, we feel  
we're back to our true natural setting.  
In our every effort, every thought,  
every dream, the sea finds its way.  
We yearn to be back in it to better  
observe it, to admire its grandness,  
always with new eyes.

To be back in it, to be astonished by  
it and to share its wonders with our  
friends.

To be back in it to imbue new life to  
the very place that's been witness  
to the birth of it all.

**OCEANREEF®**  
underwater, naturally.

WHAT IS AN IDM ( INTEGRATED DIVING MASK ) .....	6	- GSM MERCURY .....	32
PROFESSIONAL LINE IDMs		- GSM CUBE3 .....	34
- NEPTUNE III .....	8	- GSM G.DIVERS .....	35
- IRON MASK .....	12	- M101A .....	36
- PREDATOR EXTENDER .....	14	- M105 DIGITAL DC .....	37
- SPACE EXTENDER. ....	16	- M100 .....	38
SPORT LINE IDMs.....	18	HARDWIRED COMMUNICATION .....	39
- G.DIVERS .....	19	- ALPHA PRO X DIVERS .....	39
IDM MODEL COMPARISON .....	20	- UNDERWATER UNIT .....	39
FIRST STAGES AND PRESSURE GAUGE .....	22	- SURFACE UNIT .....	39
- SL35TX DIN .....	22	- ALPHA PRO X DIVERS BAG.....	40
- SL35TX INT .....	22	- ALPHA PRO X DIVERS PROFESSIONAL CABLE	40
- PRESSURE GAUGE .....	22	- CABLE FLOATERS .....	40
ACCESSORIES .....	23	AUDIO & VIDEO SURFACE UNITS.....	41
- OCTOPUS – SECONDARY REGULATOR .....	23	- GAMMA 105 .....	41
- BUMP BACK-UP MASK (& SNORKEL) PACKAGE	23	- GAMMA ALPHA.....	42
- EXTENDER KIT .....	24	SPECIAL PRODUCTS AND TOOLS.....	43
- CAMERA & TORCH SUPPORT .....	25	- PORTABLE AIR CONTROL MODULE .....	43
- FONDABLE NACS FOR EXTENDER .....	25	- NOZZLE ADJUSTMENT TOOL.....	44
- NEPTUNE III BACKPACK .....	26	- TRAINING TOOL KIT (DE LUXE) .....	44
- Q.R.S. (QUICK RELEASE SYSTEM) .....	27	- IDM REGULATOR ADAPTER.....	44
- EXTRAFLEX QUICK DISCONNECT HOSES .....	27	- PORTABLE TEST BENCH .....	44
- EXTRAFLEX COMMERCIAL QUICK DISCONNECT HOSE .....	27	- MIXER .....	44
- QD CONNECTION (MALE PART ONLY) .....	27	SPECIAL BUNDLES – AVAILABLE	
- STANDARD 9/16" ADAPTER .....	27	ACCORDING TO REGION.....	45
- SWIVEL CONNECTION .....	28	- LA project.....	45
- DUAL TANK VALVE .....	28	- B2D KEY WESTDIVER RECALL SYSTEM .....	45
- OPTICAL LENS SUPPORT 2.0 .....	29	- IDM SYSTEM.....	46
- LENSES .....	30	- PROFESSIONAL KITS .....	47
- OPTICAL LENS POINT OF SALE.....	30	- NEW G.DIVERS KITS .....	48
- MAGENTA COLOR ENHANCING LENSES .....	30	- INSTRUCTOR KIT NEPTUNE III.....	49
COMMUNICATION UNITS.....	31	OCEANREEF ONLINE SCHOOL .....	50
WIRELESS COMMUNICATION .....	32	NEMO'S GARDEN .....	51

# Our story, our adventure

---



## ORIGINS OF SCUBA DIVING

The **Gamberini Family**, at that time, owned a small tire repair shop in the heart of Genova. Like many stories of success, hard work is supported by **passion**.

It is passion that drove Giorgio and Ruggero Gamberini. Passion that animated their experiments with rubber that ended up attracting the attention of a mythical person at the time: **Commander Ferraro** – The Professor – who's story would deserve a book on its own thanks to his military scuba endeavours during the war. He became one of very few, living, recipients of the Military Gold Medal – highest recognition of the Italian Navy.

Ferraro was in the middle of designing **his first rubber masks and fins** for scuba diving and swimming when he reached out to the Gamberini brothers because of their expertise with this new material. Shortly after, the two brothers (with the addition of the third brother – Gianni), were contacted by Egidio and Nanni Cressi, as they, too, were caught up in designing their first products to **open up the underwater world to the masses**.

From these first steps the Cressi brothers founded modern Cressi-Sub and Ferraro **founded Technisub**. These successful partnerships attracted a third

famous personality: a young, Istrian refugee called Ludovico Mares, with whom, the Gamberini brothers would go on to found Mares.

Brands that not only have made the history of scuba diving – **they generated the scuba industry**. The collaboration with these innovators is one of the reasons why the Gamberini's have specialized in OEM production for rubber products for so long.

## A LUCKY MISTAKE

History of mankind is full of lucky findings and discoveries, one of the most famous ones is Alfred Nobel's discovery of dynamite.

A much less gruesome story is that of how the Gamberini brothers ended up creating **a wrong rubber mix**, in the late 1950s, **creating the first ever floating rubber**.

Gianni Gamberini, disappointed and annoyed with the result of his experiment, threw a test mix to cool off in a water recipient. To his awe, the rubber piece, went right back to the surface and floated.

Shortly after, the first floating fins were on the market. The first one to intelligently exploit this discovery was business-keen Cressi, who had great success with this line of products.



### TALKING ABOUT DIVERSIFYING AND FLEXIBILITY

Since then the Gamberini Family has always been working with rubber, plastics and its derivatives, mastering this category of raw material and continually finding **new potential uses and markets**.

After the three brothers, came Giorgio's sons: Guido and Sergio, whom, 30 years later found themselves producing Binda's historical intuition. Binda – the famous co-owner of famous luxury watch brands. Guido and Sergio produced **the first rubber straps for watches**, characterized by bright colors and bold patterns, never before imagined – the HIP-HOP watch was born... then the first Swatches.

The watch expertise continued with important clients such as Hublot and Bulgari, with the key addition of Sergio's son Massimo.

Meanwhile, other business opportunities arose. **A big market was found in medical and work safety products**. Famous products for NBC military and civil use were created.

### BACK TO THE WATER

Sergio's personal passion for water and the ocean, combined with the family's rubber and plastic manufacturing DNA, along with his studies as a chemical engineer, created the ingredients from which the modern history – **OCEAN REEF brand** – was born.

In **1993**, Sergio orchestrated **the purchase of an American scuba manufacturing company** based in San Diego – Ocean Edge.

Sergio's intuition was to create a cross over from their gas mask design and expertise, back into the scuba industry, **his first Full Face Mask for diving**: a technical and innovative product that would guarantee a more comfortable, safe and relaxing underwater experience.

From Reef-Marine and Ocean Edge, OCEAN REEF was incorporated. Since **the Full Face mask had the advantage of a free mouth** – the subsequent step was to develop the underwater communication market. OCEAN REEF is now one of the **leaders in this market**.

### FROM THE DEPTHS TO THE SURFACE

Recent history of the group has been made by **another outstanding partnership**: with Sport Distribution leader and goliath, **Decathlon**.

With an excellent team work, a long and complex project was concluded with the birth of **the first ever Full Face mask for Snorkeling use (FFSM)**. The famous and inexpensive **Easybreath** was born from this synergy. The success of this product literally revolutionized the snorkeling market – and is still shaking it –, years later. After a long while, OCEAN REEF decided to design and patent a different level product in the same category, named **Aria**, its own FFSM – with a **distinctive attention for quality, safety and design**. A true Made in Italy product. The position of worldwide FFSM leader was then solidified with other big partnerships.

### UNDERWATER GARDENING

In the meantime, another revolutionary idea "sunFaced". Italians, as we know, love talking about food.

In 2012, Sergio was on vacation in his beloved Noli, a beautiful medieval town, just 60km from Genova, when, talking with a friend, the idea to **grow plants underwater** started to shape in his mind. This began an amazing project for **underwater greenhouses** and is still dropping jaws across the world today.

Nowadays the OCEAN REEF brand is committed to make the underwater world more favorable to mankind, by making its experiences easier. Our soul rests upon our American and Italian heritage.

**This has always been our attitude.**

**This is what we believe in.**

**This is why our feet are well grounded and our mind is constantly Underwater, Naturally.**

# WHAT IS AN IDM ( INTEGRATED DIVING MASK )

Our version of how a Full Face mask For scuba should be.

## JAW FATIGUE

- Nothing to bite on.
- Frees mouth to communicate, drink.
- Enables nose breathing.

## FOGGING

- No product treatment needed
- No Fogging thanks to the air circulation system.

## MASK PRESSURE EQUALIZATION

- Breathing apparatus integrated into the mask means automatic pressure equalization at each inspiration.

## FLOODING

- Breathing inside the mask automatically purges water through the draining/exhalation valve if water were to be inside the mask for any reason. When voluntarily Flooding the mask, a couple purges of the second stage button completely clear the water from the mask.



Natural Breathing  
Through nose and mouth



## FACE SEAL

- Patented bellows double "S", "spring profile", skirt.
- Larger sealing surface.
- More comfort thanks to the "floating effect" on the face.
- Available in 2 sizes.
- Seal capability derived from gas mask applications (CBRN tests) – the hardest test possible a face seal has to withstand.

## FIELD OF VISION

- Larger Field of vision than competitors (italcert Certification PPE-05 RIF 1332/05).
- Visible light transfer of the visor is 92%, meaning a clearer view.
- Designed wider and sits closer to the face than other visors, giving a broader field of vision and less volume buoyancy.
- For visual comparison check page 10.

## DURABILITY AND SCRATCH RESISTANCE

- Transparent polycarbonate visor made in Italy.
- Both sides are coated in siloxane resin for improved scratch and chemical resistance.
- Impact resistance tested by STANAG 4296 standards: impact of a steel ball traveling at 540 kph (335 mph).



watch the video

## HEAD HARNESS AND FAST ROTATING BUCKLE II

- Head harness attached to the face shield not on the skirt meaning no tearing and much better resistance to tugging.
- Six straps meaning no risk of losing reg if unconscious (much greater chance of surviving such an event) or violently hit.
- Wide strap tips for easy grasping.
- Fast rotating buckle system (different configurations per model) for comfortable and quick doffing and donning on the surface and secure, fast operations during underwater bail out or wearing.
- Neptune III now features first and only ever one-hand quick release system (QRS) doffing handle. Find out more on page 26.

SKU

OR005062

UPC

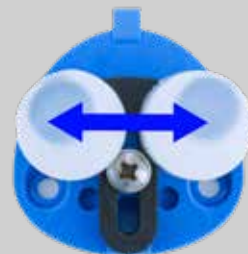
764500012610



Our multitool is the perfect holder for the equalization extensions.

## 3D EQUALIZATION SYSTEM

- Patented design.
- 3 way directional adjustment system: up/down, wide/narrow, close/far. Made for maximum comfort and nose breathing.
- Pushing the mask towards the face when needed causes the plugs to create a nasal seal.



## AIR CIRCULATION

- Air circulation is achieved with an orinasal pocket so that CO2 build-up is not mixed with fresh air.
- One-way circulation keeps mask clear.



## SURFACE AIR VALVE

- Easy to grab, sturdy design.
- Large air vents.
- Allows IDM divers to breath ambient air when at the surface, without having to take off the mask.



# neptune III

Evolved Innovation.  
Badass Design.



**DESIGNED BY DIVERS, FOR DIVERS.**



**EFFORTLESS** - Completely new 2nd stage design and engineering. This FFM breathes smooth as silk.

**BREATHES**  
**+33%**

Vertical body, balanced – all new Neptune III regulator delivers amazingly smooth breathing at any depth. This IDM breathes +33% better than our Neptune Space. There is no bulk on your chin, exhaled bubbles in your eyesight or getting stuck while moving your head left and right.

**FUNCTIONAL** - This product can be used in almost any conditions, we built it that way. For example, the Neptune III is the First FFM that can be doffed with one hand.



**RUGGED** - Signature double coated visor is renowned for its unparalleled toughness and clearness, now combined with tech PU regulator protection and silicone deflector to absorb the shocks of intense scuba diving use.



**INNOVATIVE** - The 2nd stage is Fully integrated into the mask, as per our company's philosophy, but now it can be detached quickly (Level 1 tech certification required) For Faster than ever servicing and swap. Find out more on page 50.



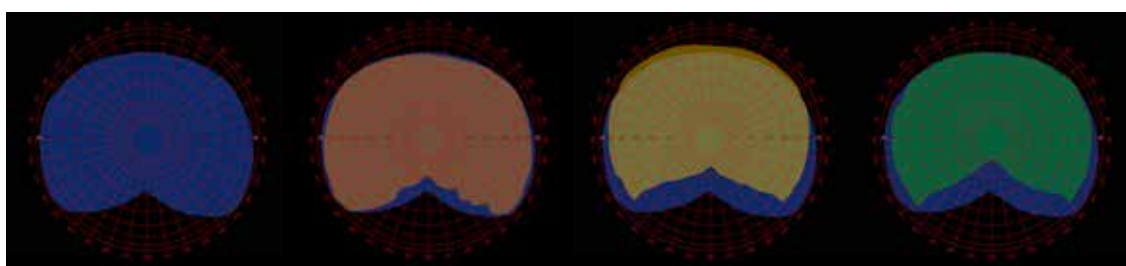
**COMFORTABLE** - Premium materials, redesigned orinasal pocket resulting from the experience we have learned from more than 1 million of FFSM we have made for people around the globe.

**SAV III** – while designing the IDM we decided to improve our professional surface air valve as well. Now with a new design, better grasping surface and an internal valve, the mask will not fog when not connected to the cylinder and water will not drip in if you leave the valve open when submerging your head.



## PANORAMIC

We held the top spot for field of vision of any FFM's before the Neptune III, now we have increased it another 10%.



OCEAN REEF Neptune III

OCEAN REEF Neptune III  
OCEAN REEF Space

OCEAN REEF Neptune III  
Competitor 1

OCEAN REEF Neptune III  
Competitor 2

The Neptune III visor is all new and designed from scratch – it offers the widest field of vision of any conventional and any Full Face mask on the market. The Neptune III visor surpasses the Space's field of vision by +10%. Using an uncommon vertical body regulator was a conscious design choice to push vertical vision to its maximum potential. Reading instrumentation and operating your equipment with a FFM has never been easier.

Approx size of the mask:

24 cm (9.44 inch) high  
20 cm (7.87 inch) wide  
20 cm (7.87 inch) deep

**-47%**

### BUOYANCY

Neptune III is 47% less buoyant than other FFM's

Weight of mask not in use (saltwater):

0,35 kg (0,77 lbs)

**-24%**

Buoyancy (in saltwater): **INTERNAL VOLUME**

0,35 kg (0,77 lbs)

24% smaller than competition.

COLOR	SIZE	SKU	UPC
BLACK	S/M	OR025200	764500012351
	M/L	OR025201	764500012368
WHITE	S/M	OR025202	764500012375
	M/L	OR025203	764500012382



**SAFE**



The physiological benefits of nose breathing are now getting more and more attention and that is one of the great "pros" of a Full Face Mask, but the Neptune III combines all the benefits, plus a dive/pre-dive switch, to make sure that you have all the control you want over your 2nd stage.



## NEPTUNE III PACKAGE

Diving Full Face mask w/int 2nd st, surface air valve, hose, pressure gauge, octopus, SL35TX INT (or DIN) First stage + bump (back-up mask) + quick disconnect hose.



### NEPTUNE III SYSTEM



Diving Full Face mask w/ int 2nd st, surface air valve, hose SL35TX DIN (or INT) First stage.

AVAILABLE  
ACCORDING  
TO REGION



### NEPTUNE III MASK

Neptune III Diving Full Face mask w/int 2nd st, surface air valve & hose.

MODEL	COLOR	SKU	UPC
1st Stage SL 35 TX INT  or		9922	764500000402
1st Stage SL 35 TX DIN 		9923	764500000419
ExtraFlex Quick Disconnect Hose	Black 32"	OR024998	OR024998
Bump - Back Up Mask & Snorkel Package	Black	OR019100	764500011576
Octopus - Secondary Regulator w/Quick Disconnect Hose	Yellow	OR024900	764500011552
Pressure gauge	Black	OR025250	764500012405
Neptune III Back Pack		OR005050	764500012405



Neptune III Diving Full Face mask,



SL35TX INT (or DIN) First stage



Quick disconnect hose



Bump (Back-up mask)



Octopus



Pressure gauge

Certified EN250:2014 A<10°

# *ironmask*



## SPECIAL BENEFITS



Free Annual Service and Maintenance For 4 years From the purchase date (Once per year at Facilities, shipping is not included.)



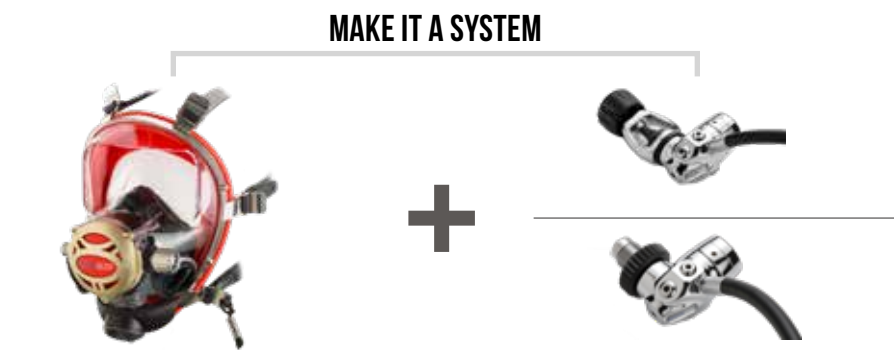
10% Discount on all accessories including Visor, lights and Communication units. (Not valid for the purchase of another Full Face mask. Limit 1 accessory per mask purchased. Offer expires 1 year after the purchase date).



Free Upgrades For 2 years From the purchase date.

MODEL	SKU	UPC
IRON	OR025021	764500000327

● In 1 color combination: M/L Red/Gold/Black



The Iron mask is a Chem Haz mask. Made to be used in the worst environments possible, this IDM can manage a high percentage of Hydrocarbons in any water environment.

Regulator cover in marine-grade Anodized Anticorodal®, light weight, resistant, durable aluminum.

Reg adjustment knob, internal screw, in AISI 316 stainless steel.

AISI 316 stainless steel Frame and buckles.

Sensitive reg adjustment knob, sturdy and easy to grab even wearing thick gloves.

2 NBR straps for a change on the fly if ever needed.

1090 g total mask weight (2.40 lb).

Heavily reduced positive buoyancy, 172 g (0.40 lb).

FVMQ rubber Face Seal, Inhalation Diaphragm, Exhalation Valve to withstand exposure to hydrocarbons.

Purge button: specific rubber made to withstand exposure to highly contaminated water.

Cold water certified, balanced, on demand, integrated regulator.

Polycarbonate visor (siloxane double coated for scratch resistance).

Directional exhaust valve (4 positions).

Dive / pre dive switch.

SAV (Surface Air Valve) included.

LIMITED LIFETIME WARRANTY

#### notes

Cannot mount Extender Frame and Kit unless clamping band is switched to nylon: ask when ordering for quote.

WHEN PURCHASING ACCESSORIES CONSIDER THE RESISTANCE OF MATERIALS TO HYDROCARBONS



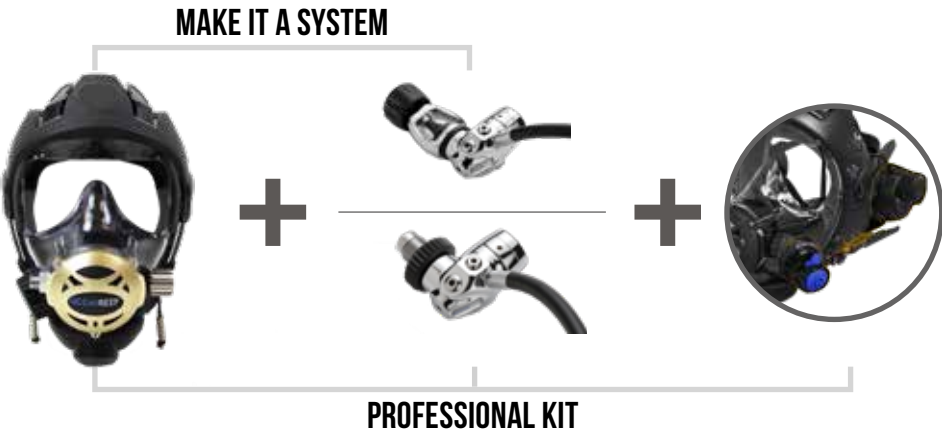
# PREDATOR EXTENDER



MODEL	SKU	UPC
PREDATOR EXTENDER	OR025115	764500011538



● Available in M/L Black/Gold/Steel



Commercial divers' best choice, Special Corps Mask of choice, a mask that can withstand the toughest and most frequent use possible.

- Regulator cover in marine-use Anodized Anticorodal®, lightweight, resistant, durable aluminum.
- Reg adjustment knob, internal screw, in AISI 316 stainless steel. Easy to operate with thick gloves.
- 2 NBR straps included with the mask.
- Reduced positive buoyancy, 232 g (0.5 lb.).
- Stainless steel quick releases for easy doffing even with thick gloves.
- Directional Exhaust valve.
- Dive/pre dive adjustment.
- Double coated siloxane vision.
- Professional SunFace Air Valve.
- Comes with professional bag.
- Comes with Pull Extender kit accessories: new NACS, earphone supports, assembled Extender Frame.

Balanced, on demand, integrated regulator.

LIMITED LIFETIME WARRANTY

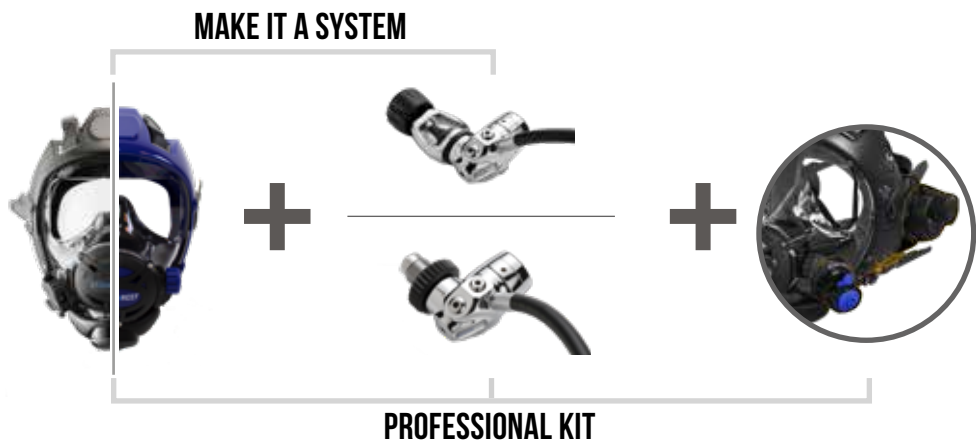


# space EXTENDER



COLOR	SIZE	SKU	UPC
ALL BLACK	S/M	OR025102	764500001386
	M/L	OR025103	764500001393
ALL COBALT	S/M	OR025109	764500011514
	M/L	OR025110	764500011521

●● Available in S/M and M/L : All Black and All Cobalt



The Space Extender, is the mask for the avid diver, advanced adventurer and diving professional. Balanced, on demand, integrated regulator. Polycarbonate visor (siloxane double coated for scratch resistance). Directional exhaust valve (4 positions). Dive / pre dive switch. Includes the Extender Kit (Frame + accessories). SAV (SurFace Air Valve) included.

This IDM has it all right off the bat. A Fully customizable product that can serve all your needs and grow with your preferences thanks to a Full line of accessories that can be integrated at any time with your mask.

LIFETIME WARRANTY



G.divers



COLOR	SIZE	SKU	UPC
COBALT	S/M	OR025016	764500000143
	M/L	OR025015	764500000136

● Available in S/M and M/L in Cobalt

### MAKE IT A SYSTEM



The G.divers series IDM (Integrated Diving Mask) is the perfect mask for the sport diver. Suitable to start diving (proper training required of course) or for an already passionate diver, the G.divers is the perfect first step into the IDM, Full Face Masks world, without having to compromise in the quality of the product, with endless possibilities of customization, whenever desired.

Balanced, on demand, integrated regulator. Polycarbonate visor (siloxane double coated for scratch resistance). Exhaust/draining valve. 2 year warranty. 6 point harness for secure and comfortable fit on the head.

A fully customizable product that can serve all your needs and grow with your preferences thanks to a full line of accessories that can be integrated at any time with your mask.

SAV - SunFace Air Valve available as accessory, code OR025020.



## IDM MODEL COMPARISON

MODEL	NEPTUNE III	IRON	PREDATOR EXTENDER	SPACE EXTENDER	G.DIVERS
EXTENDER KIT INCLUDED	yes	x	yes	yes	x
ORINASAL POCKET COLOR	black	black	black	black	transparent
DIVE / PRE DIVE	yes	yes	yes	yes	x
ADJUSTABLE FLOW KNOB	not needed	stainless steel	stainless steel	rubber	rubber
SURFACE AIR VALVE INCLUDED	new SAV III (professional)	yes (professional)	yes (professional)	yes (professional)	x (optional dedicated)
DIRECTIONAL EXHAUST VALVE	not needed (shock absorbing)	yes	yes	yes	no (Fixed)
QUICK RELEASES	new Q.R.S. (one hand doffing handle)	stainless steel	stainless steel	tab	ergonomic cilinder
REGULATOR FRONT COVER	tech PU chassis	golden anodized anticordal	golden anodized anticordal	glass reinForced nylon	glass reinForced nylon
FOR USE IN POLLUTED ENVIRONMENTS	x	yes	x	x	x
NITROX UP TO 40% COMPATIBILITY	yes	yes	yes	yes	yes
BAG	new Neptune III backpack	professional padded bag	professional padded bag	professional padded bag	drawstring bag
LIFETIME WARRANTY	yes	yes and more	yes	yes	x (2 years)
COMPATIBILITY WITH ACCESSORIES	yes (across the line)	depending if needed to be hydrocarbon resistant	yes (across the line)	yes (across the line)	yes (across the line)
SIX POINT STRAP	yes	yes	yes	yes	yes
DOUBLE COATED VISOR	yes	yes	yes	yes	yes
REGULATOR CHARACTERISTICS	Balanced Certified EN250:2014 - (cold water starting January 2022)	balanced	balanced	balanced	balanced
EQUALIZATION SYSTEM KIT	yes	yes	yes	yes	yes
SCREWDRIVER	multitool - (starting January 2022)	yes	yes	yes	yes
STANDARD HOSE INCLUDED	yes	yes	yes	yes	yes

# VESPER

**NEW  
OCEANREEF  
VISOR LIGHT**

- Includes battery pack
- Rechargeable with magnetic cable
- Easy to install and remove by the end user
- Ultra light and ultra compact
- Activation with sensor
- S.O.S. mode
- Extra brightness.

**STAY TUNED!**

**AVAILABLE  
FROM MARCH 2022**

## FIRST STAGES

---

MODEL	SKU	UPC
SL35TX DIN	9923	764500000419
SL35TX INT	9922	764500000402

Available in Int (yoke) standard or DIN

OCEAN REEF IDMs are CE certified with this, high performance, environmentally sealed and balanced diaphragm first stage with anti-freeze kit.

Adjustable intermediate pressure.

Made of chrome plated brass, with a stainless steel piston and spring, and a Teflon™ seat.

2 high-pressure ports 7/16-20 UNF.

Flow rate of approx. 4800 l/m at 140 bar

### SL35TX DIN

Screw connection at 300 bar (4500 Psi).



### SL35TX INT

Standard yoke connection 232 bar (3364 Psi).



## PRESSURE GAUGE

Single piece brass body; copper beryllium coiled inner mechanism; bourdon tube; rack and pinion movement for smooth and precise operation; tempered glass transparent window; plastic cover with loops for fixing; graduation 350 BAR/5000 PSI, Full scale.





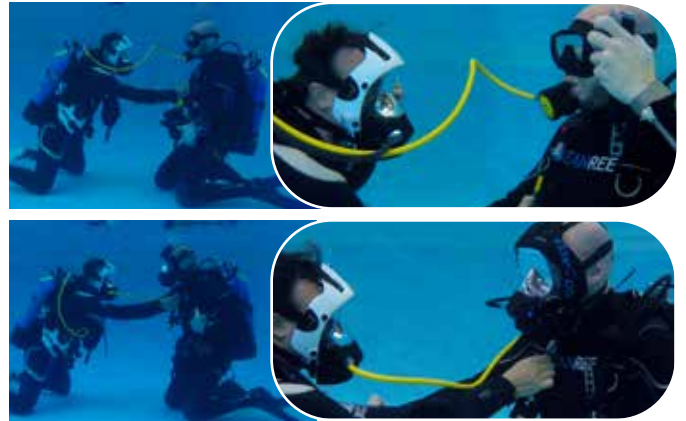
MODEL	SKU	UPC
OCTOPUS	OR024900	764500011552

Available in: 120CM /48" hose, Yellow.

## OCTOPUS - SECONDARY REGULATOR

This backup second stage is balanced, has a dive pre-dive switch, comes with a male quick disconnect part, a 120cm/48" QD ExtraFlex Yellow hose.

Every IDM diver, especially if diving with QDs or Buddies with QDs should have the option, if needed to bail out with secondary conventional second stage, or QD hand connection.



MODEL	SKU	UPC
BUMP	OR019100	764500011576

● Available in Medium size, matte and shiny black

## BUMP - BACK UP MASK (& SNORKEL) PACKAGE

Safety when diving is a primary concern For OCEAN REEF.

That is why we put together a back up bailing system made of a comfortable conventional mask with fabric strap for easy and quick donning, a flexible, semi-dry snorkel and a tough pouch where you can fit the mask, the rolling snorkel and hang it on your BCD or on your belt thanks to the 2 D rings and belt loop.



# EXTENDER KIT

MODEL		SKU	UPC
BLACK	●	OR025061	764500012535
WHITE	○	OR025062	764500012542
GREEN	●	OR025043	764500001478
COBALT	●	OR025038	764500011422
PINK	●	OR025064	764500012580
BLUE	●	OR025063	764500002062
EMERALD	●	OR025039	764500011439



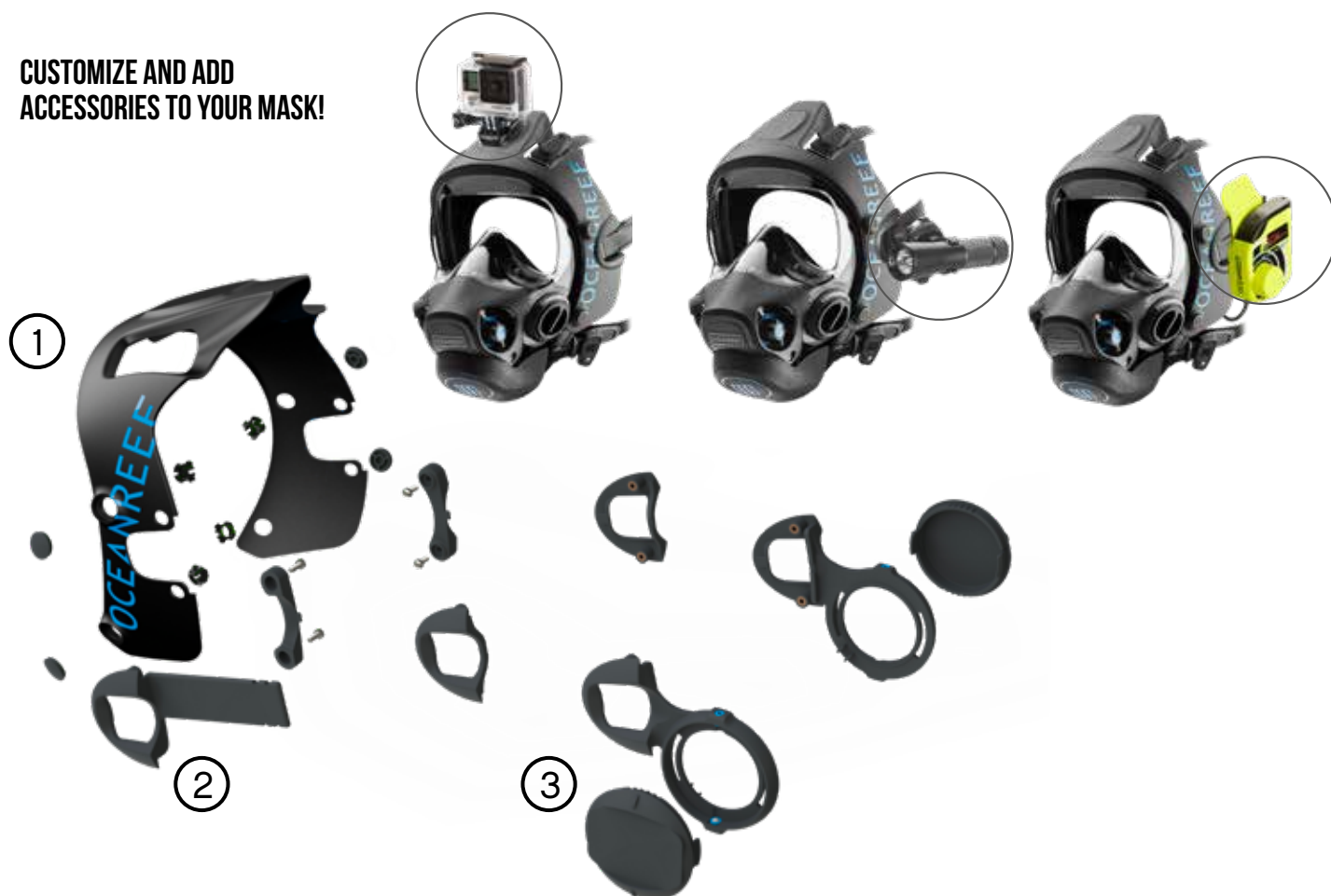
watch the video

CHECK THIS VIDEO  
OUT FOR SOME IDEAS

Available in one size, 7 colors.



CUSTOMIZE AND ADD  
ACCESSORIES TO YOUR MASK!



The perfect addition to your Gdivers basic model IDM, or any other OCEAN REEF Full Face scuba masks From 2006 on (with nylon clamping band).

This kit is available in 7 different colors.

Each kit includes:

- ① **FRAME:** Frames are an extra protection For your head, an aesthetic Finishing to your mask, a customization to better identify the diver and a wide surface to add anything you can think of. On the top there is a Flat surface, perfect to add any GoPro – like sport camera.
- ② **NEW NACS**, or Neptune Adjustable Communication Support is a Patented OCEAN REEF accessory used to mount your OCEAN REEF communication device to your IDM. It's light, sturdy and durable. It distributes the weight of the comm unit perfectly on the mask, you don't feel it anymore.
- ③ **EARPHONE SUPPORTS:** not only these can be used in case you have a GSM G-Power SL communication unit (you can install the earphones on them), you can also drill holes in the pre-defined points and install side lights. These supports also rotate at a 30° angle. the same support can also be used For sport cameras For an on-board view point!

MODEL	SKU	UPC
EXTENDER CAMERA AND TORCH REMOVABLE SUPPORT	OR025060	764500011385

## CAMERA & TORCH SUPPORT

Holds anything cylindrical up to about 70mm (2.7inch) in diameter with re-openable, heavy duty zip ties. Slide comes off when needed For handling – snaps in easily and holds in place. Adds the possibility For horizontal tilt angle (adding to the 30° vertical of the accessory support). Compatible with standard GoPro fitting.



MODEL	SKU	UPC
FOLDABLE NACS	OR025056	764500011378

## FOLDABLE NACS FOR EXTENDER

New NACS, or Neptune Adjustable Communication Support is a Patented OCEAN REEF accessory used to mount your O.R. communication device to your IDM. It's light, sturdy and durable. It distributes the weight of the comm unit perfectly to the point you don't even feel it anymore. This model now Features the possibility to Fold it inside the mask when storing the IDM. Compatible with left ear type comm units, such as the GSM G.divers.



**AVAILABLE  
ACCORDING  
TO REGION**

A large, black, multi-compartment dry bag with blue accents. The bag features several straps, buckles, and a prominent logo that reads "OCEANREEF" in blue, with "underwater, naturally" written below it in a smaller font. The bag is shown from a three-quarter view, highlighting its various pockets and sturdy construction.

Neptune III Backpack, a tool designed by divers, for divers. This backpack has dozens of features that will challenge your creativity and satisfy your need for an intelligent solution when traveling with your OCEAN REEF Full Face Mask. Versatility, adaptability, functionality, customization and badass design are the key words to this new, exciting product from OCEAN REEF.

[illegible]

## INSIDE CONFIGURATION



MODEL	SKU	UPC
Q.R.S. (QUICK RELEASE SYSTEM)	OR005096	764500012603

## Q.R.S. (QUICK RELEASE SYSTEM)

New and unique OCEAN REEF invention, thanks to the Q.R.S. (Quick Release System) the FFM can be doffed with one hand.

This accessory is compatible with all OCEAN REEF Full Face masks (sold separately) and is included with the new Neptune III mask.



MODEL	SKU	UPC
EXTRAFLEX QD HOSE 80CM /32"	OR024998	764500000877
EXTRAFLEX QD HOSE 120CM /48" YELLOW	OR024997	764500000884
EXTRAFLEX COMMERCIAL QD HOSE 80CM /32"	OR024996	764500000891
QD MALE PART ONLY	33019	764500000914
STANDARD 9/16" TO QD ADAPTER	OR024995	764500000907

Four layer technology, inner layer non-toxic polyurethane blend. Polyester first layer reinforcement, thermo rubber jacket. Polyethylene anti-scratching reinforcement. Commercial & professional hose requires two hands to disconnect.



## EXTRAFLEX QUICK DISCONNECT HOSES



## EXTRAFLEX COMMERCIAL QUICK DISCONNECT HOSE



## QUICK DISCONNECT (MALE PART ONLY)



## STANDARD 9/16" ADAPTER

Turns standard hose into QD hose

## ACCESSORIES

---

MODEL	SKU	UPC
SWIVEL CONNECTION	33033	764500000945
DUAL TANK VALVE	33049	764500001010
PRESSURE GAUGE	OR025250	764500012344

### SWIVEL CONNECTION

The Swivel connection moves freely turning 360° around its axis. It allows free movement of the hose and a streamlined configuration.

Chromium plated brass.

Can be used with quick disconnect.



### DUAL TANK VALVE

Allows connection of the second stage directly to two gas sources (mix, side mounting, pony bottle).

Allows a diver to alternate between sources without removing the mask.

Solid piece of chromium plated brass.

Stainless steel cord attaches to safety clip (avoids an unwilling switch of gas).

Nice and smooth movement while easy to operate with thick gloves.

Can also be used with quick disconnect.



Not available in UK.



MODEL	SKU	UPC
OPTICAL LENS SUPPORT 2.0	OR033304	764500001898

- Available in one size, Black



## OPTICAL LENS SUPPORT 2.0 *livingeco*

Compatible with IDMs M/L and FFSSMs Aria, Aria QR+, UNO (sizes ranging from S/M to L/XL, XS excluded), Sea Vu Dry S/M - L/XL, Easybreath S/M - M/L - L/XL, Tusa Sport S/M to L/XL. Lens correction for your IDM and FFSSM without ruining your mask.

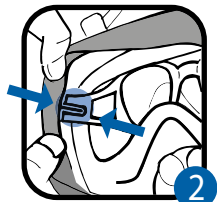
Use them as convenient glasses on land - snap the legs off and put the frame in your mask when you scuba dive or snorkel for an optical corrected mask!

This product is part of our living eco line - 100% plant based plastic.

### IDM's



EASY  
TO  
MOUNT



## ACCESSORIES

MODEL	SKU	UPC
LEFT -1.0	OR033400	764500002116
RIGHT -1.0	OR033401	764500002123
LEFT -1.5	OR033402	764500002130
RIGHT -1.5	OR033403	764500002147
LEFT -2.0	OR033404	764500002154
RIGHT -2.0	OR033405	764500002161
LEFT -2.5	OR033406	764500002178
RIGHT -2.5	OR033407	764500002185
LEFT -3.0	OR033408	764500002192
RIGHT -3.0	OR033409	764500002208
LEFT -3.5	OR033410	764500002215
RIGHT -3.5	OR033411	764500002222
LEFT -4.0	OR033412	764500002239
RIGHT -4.0	OR033413	764500002246
OPTICAL LENS POINT OF SALE - 28 LENSES	OR033420	764500011453
MAGENTA COLOR ENHANCING LENSES - PAIR	OR033415	764500011569

## LENSES

Single prescription lenses For our Optical lens 2.0 support are available in 7 different corrections per eye.

## OPTICAL LENS POINT OF SALE

We also have a Point of Sale that includes 28 lenses.

## MAGENTA COLOR ENHANCING LENSES

Magenta lenses are made to enhance your uw vision. Because the water absorbs much of the wavelength of sunlight, colors might look less intense, dull, or different from what they really are. These lenses, that can be installed on your Optical Lens 2.0, will correct the water filtering and make you enjoy the reef's amazing color.







**NEW  
BLUE-MIC!**

**IMPROVED  
CLARITY**

MODEL	UPC	SKU	ASIN
GSM MERCURY	OR033150	764500011507	B07YBCRVMX

## THE MOST COMPLETE UNDERWATER WIRELESS UNIT ON THE MARKET

This unit is blending four different OCEAN REEF units into one: the extended range of the Gpower, the like-stereo sound of the GSM Gpower SL, the cleanness and double channel option of the DC and the battery life of the Gdivers.

### Key Features:

- It's Foldable inside the mask. Now you don't need to assemble the comm unit and take it off the mask. Simply fold it close and pack the IDM.
- Brand new rechargeable, changeable battery with an autonomy of approximately 30 hours. No need to purchase disposable batteries to throw away once they are done. No need to purchase batteries before a dive trip. Recharge with a standard micro USB cable from any power source you want.
- Digital as the first ever unit we introduced in the market – the DC. This one adds clearer communication, with a higher volume AND 2 earphones for a stereo-like experience.
- Double channel unit for separate teams/conversations, depending on the surrounding environment conditions, it exceeds a range of 800ft /250 meters.
- DAT (Digital Activation Transmission) – hands-free mode.
- Compatible with all prior OCEAN REEF units and competitor units on same frequency.
- Easy and solid new PTT button. Button module doesn't create entanglement and can be operated via a flat, sturdy button and easy lever. As intuitive as you would want it.
- Voice menu that is clear and immediate to learn, matches perfectly the simplicity of the buttons.
- 3 level volume.



watch the video



VOICE  
MENU.



PTT BUTTON  
INTEGRATES  
THE BLUE-MIC.



800FT/250M.  
2 CHANNELS  
AVAILABLE.



PACKING  
INTELLIGENCE.



2x  
2 SPEAKERS  
INTEGRATED.



RECHARGEABLE.



EXTENDED  
BATTERY LIFE.

## WIRELESS COMMUNICATION

---

MODEL	SKU	UPC
GSM CUBE3	OR033131	764500000686

### GSM CUBE3

The most versatile unit possible.

- Capable of communicating in three different ways: wireless, hard wired, VHF.
- It can be connected to the ALPHA PRO X DIVERS surFace unit For cable hardwired communication – Full duplex, hands Free communication.
- The unit is a permanent wireless unit. Always on receiving mode For any communication on channel 1 Frequency when battery inserted.
- PTT button activates wireless transmission on channel 1 when battery inserted.
- Six-pin waterproof connection allows connecting and detaching From cable communication while underwater.
- GSM CUBE3 can be connected to a separate unit in order to interFace with a VHF radio and allow radio communication while on the surface.



MODEL	SKU	UPC
GSM G.DIVERS UNDERWATER TRANSCIVER UNIT	OR033109	764500000181

## GSM G.DIVERS

Wireless underwater transceiver unit, with the autonomy of approx. 30 hours in receiving mode, and range of operation of 200-250 meters (calm sea water).

Lightweight, powerful single channel and "push to talk" communication system make the GSM Gdivers the perfect addition to any training class or guided tour; For extra safety and For Fun!

The unit operates on the same frequency as all other OCEAN REEF units and most popular wireless communication units on the market.

The GSM Gdivers uses a 9V alkaline battery and has a "low battery" alarm which beeps every 30 seconds when the battery is low.

Damper (For use in pools to reduce reverbs): code OR023006.



## WIRELESS COMMUNICATION

MODEL	SKU	UPC
M-101A G.DIVERS UNDERWATER RECEIVING UNIT	33107	764500000198



### M101A

The M101A G.divers is a receive-only unit operating on one channel. The M101A fits on any conventional mask strap or Full Face mask models. It might be held and shared by more divers thanks to the high quality speaker. The M101A uses a 9V alkaline battery and has a "low battery" alarm which beeps every 30 seconds when the battery is low. It's the perfect instrument for instructors and team leaders to communicate with divers that don't wear IDMs with the possibility of integrating a transceiver unit.



## WIRELESS COMMUNICATION ( SURFACE )

MODEL	SKU	UPC
M-105 DIGITAL DUAL CHANNEL TRANSCIVER SURFACE UNIT	OR033128	764500000679

### M105 DIGITAL DC

SurFace operator can easily change From one channel to the other by pressing a button, distinguishing two different lines of communication if needed.

SurFace to diver unit.

- Transceiver unit.
  - Allows communication with any number of divers wearing wireless comm units.
  - Direct communication with PTT walkie-talkie.
  - Uses 6V DC lead battery. Allows up to 48 hours of operation.
  - Can be powered with a 12V DC source.
  - Activated only when the antenna is connected to the unit to prevent unwanted loss of power.
  - 10mt (approx. 33ft.) transducer cable length. Available in different lengths on request.
- Long cables may require amplifier mounting.
- Has the addition of a second transceiver channel

Comes with:

- Headphone connection.
- Volume control.
- Speaker.
- Water resistant case pressure compensation valve.
- Battery charger.
- Easy to read LED battery tester which shows the power status of the battery.
- Transducer cable.
- Bag.
- Microphone.

Available accessories:

- Audio out cable. (code 8590).
- Headset. (code 8589).
- Tuner For >50 meters M105 Antenna. (code OR008609).
- Splitter For connecting 2 antennas with M105 or M105DC. (code OR023001).
- External power cable code 8594



MODEL	SKU	UPC
M-100 G.DIVERS PORTABLE TRANSCIVER SURFACE UNIT	33165	764500000204



## M100

The M100 G.divers is a portable surface transceiver unit that may be worn on the operator's belt.

This is a high performance, compact, and easy to use unit. It is made to respond to the demands of communicating with divers in action without carrying expensive, complicated and heavy units. The size of the main unit is similar to a smartphone / mobile..

The main unit has a PTT (Push to Talk) button and a headphone/microphone connector. The unit turns on when the headphone/microphone is connected to the main unit. The unit turns off automatically when the headphone/microphone is removed. A 10 meter (33 Feet) transducer cable connects to the main unit and is lowered into the water.

The operator may control the depth of the transducer.

It operates on one channel and uses a 9V replaceable alkaline battery with autonomy of approximately 30 hours. The range of operation is approx 200 meters (600 Feet).

The unit comes with the Following items:

- 10 meter (33 Feet) transducer cable
- Headphone/microphone
- Screwdriver.

MODEL	SKU	UPC
ALPHA PRO X DIVERS 110/220V	OR033132	764500000709
ALPHA PRO X DIVERS 110/220V SURFACE UNIT ONLY	OR033133	764500000716
ALPHA PRO X DIVERS UW UNIT ONLY	OR033135	764500000730

## ALPHA PRO X DIVERS

INCLUDES: UW UNIT + SURFACE UNIT + PROFESSIONAL 50 M CABLE

This communication unit is specifically designed to meet the needs of professional and commercial divers that cannot compromise on a Full duplex, hands free, super clear communication system. Cable communication is still unequalled in quality, while needing a hard connection diver to surface.

### UNDERWATER UNIT

- This unit can be sold separately, but is designed to be used specifically with the ALPHA PRO X DIVERS SURFACE UNIT.
- The unit itself is a hardwired comm. unit.
- Clarity of communication is outstanding.
- Range depends on cable length.
- Includes recall button.
- Speaker and microphone as featured in all comm. units.

### SURFACE UNIT

- Hardwired, Full duplex surface unit for underwater communications.
- 2 ports for 2 communication cables.
- On/off and volume adjustment switches.
- Microphone.
- Switch for communication between surface & diver 1, surface & diver 2, surface & diver 1 & diver 2.
- Headset port (headset optional).
- External 12v power port (cable optional).
- Battery charger port.
- Audio/video recall.
- Incorporated speaker.
- 12V rechargeable battery.
- Underwater unit volume adjustment (for both divers).
- Stand-by autonomy: 24h.



## HARDWIRED COMMUNICATION

MODEL	SKU	UPC
PROFESSIONAL ALPHA PRO CABLE 50M/150FT BAG	8686	764500000754
PROFESSIONAL ALPHA PRO CABLE 75-100M/225-300FT BAG	8687	764500000761



### ALPHA PRO X DIVERS BAG

This bag is designed to be incredibly tough to carry coil cables, it is bright colored and easy to spot. The drawstring top prevents items from falling out but comfortably leaving the cable coiled and connected to a surface unit. Conveniently comes with a handle and shoulder strap.

MODEL	SKU	UPC
ALPHA PRO X-DIVERS PROF CABLE 50 M / 150 FT	OR033134	764500000723



### ALPHA PRO X DIVERS PROFESSIONAL CABLE

Professional cable (50 meters -165 Ft long) (can be sold separately). Includes yellow rope exterior -10mm diameter and 4000-newton resistance. Available in any length with an optional bag. Available in any length (max 200m/600' and optional bag (up to 100m/300').

MODEL	SKU	UPC
CABLE FLOATER (3 PIECES)	OR015001	764500000778

### CABLE FLOATERS

Useful accessory to keep audio/video cables floating avoiding entanglement.

- 3 pieces per pack.
- Two Velcro straps keep Floaters in position



MODEL	SKU	UPC
GAMMA 105 NTSC	OR033107	764500000792
GAMMA 105 PAL	OR033108	764500000785

### GAMMA 105

This is an audio/video surface unit. Integrates wireless audio and hardwired video.

- Ultrasonic surface communication unit: 10 m (33 Ft) transducer cable, microphone, external power supply cable, audio port, headphone port, volume control, and loudspeaker.
- 7 inch 16:9 color LCD monitor; speaker; audio and video port, brightness and color controls.
- Video port for external video recorder or monitor.
- 12V battery.
- Battery charger connector.
- 12V battery charger.
- CCD Micro Video Camera with underwater housing and mounting bracket. Also sold separately.
- 50 m (165 Ft) camera cable. Available length on request.



## AUDIO & VIDEO SURFACE UNITS

---

MODEL	SKU	UPC
GAMMA ALPHA NTSC	OR033104	764500000815
GAMMA ALPHA PAL	OR033105	764500000808

### GAMMA ALPHA

- The Gamma Alpha is similar to the Gamma 105, but where the latter integrates a wireless M105 unit and video, the First integrates Alpha Pro X divers hardwired communication with video.
- Gamma Alpha can receive audio and video from two divers.
- 7 inch 16:9 color LCD monitor; brightness and color controls.
- On/OFF and speaker volume adjustment switch.
- Speaker.
- Microphone.
- Switch for communication between surface & diver 1, surface & diver 2, surface & diver 1 & diver 2.
- Headset port (headset optional).
- Audio/video recall from divers.
- 12V rechargeable battery + battery charger.
- 2 plugs for audio connections to divers.
- 2 plugs for video connection to two divers.
- 3 video out plugs.
- Underwater unit volume adjustment (for both divers).
- Switch for the video: 2 positions to show the video of diver 1 or diver 2.
- External power charger, 12V (cable optional).
- Stand-by autonomy: 24h.
- 1 professional surface/diver cable (50 meters, 165 ft. long) (can be sold separately). (code OR033134)
- 1 underwater unit (alpha pro x divers uw unit) (can be sold separately). (code OR033135)
- 1 video cable (50 mt, 165 ft. long) (can be sold separately). (code OR008575)
- 1 CCD micro video camera (can be sold separately). (code OR008573 NTSC; code OR008574 PAL).



MODEL	SKU	UPC
ACM BASE UNIT (DIN)	CUSTOM PRODUCT	CUSTOM PRODUCT
ACM BASE UNIT (INT)	CUSTOM PRODUCT	CUSTOM PRODUCT

### PORTABLE AIR CONTROL MODULE

- Lightweight, portable control box for surface air supply + communication (if requested) operations.
- If communication is requested, a ALPHA PRO X DIVERS unit is installed into the ACM (underwater units not included) permitting full duplex with max 2 divers. Cables will then run down with surface air supply cables.
- Depth Gauge/Pneumo Systems: Dual reading gauges continuously monitoring the diver's depths from 0-40m (0-130ft). Maximum recommended user depth: 40m, 130ft FSW.
- Depth Monitoring/Pneumo Knob is used to meter the flow of air used for depth measurement.
- The Stainless Steel Air Outlets Fittings connect the diver's air supply hose to the ACM, providing a strong, reliable, corrosion resistant connection. Shut-off valves allow the isolation of one diver's air supply from the other.
- Regulator Adjustment Knob controls the air pressure delivered to the diver's umbilical. Variable pressure settings are obtainable.
- Selector Valve Handle is used to choose either one of the air supply cylinders. Individual cylinders may be changed out without interrupting the dive.
- High Pressure (HP) Supply Gauges directly monitor the pressure in each of the air supply cylinders.



## SPECIAL PRODUCTS AND TOOLS

---

MODEL	SKU	UPC
BASIC LEVEL 2 TOOL KIT	OR035021	
OCEAN REEF LUXURY TOOL KIT	OR035010	764500001201
NEPTUNE SPACE NOZZLE ADJUSTMENT TOOL	9754	764500001171
NEPTUNE SPACE REGULATOR ADAPTER	9794	764500001195
NEPTUNE III REGULATOR ADAPTER	OR005068	
PORTABLE TEST BENCH <b>CLASS B PRODUCT</b>	9805	764500001188
MIXER FOR AUDIO OUTPUT M105 AND GAMMA 105	OR006512	764500001140

### BASIC LEVEL 2

Tools required For servicing the IDM masks.

### OCEAN REEF LUXURY TOOL KIT

Tools needed For servicing the IDM masks.

### NOZZLE ADJUSTMENT TOOL

For every Ocean Reef Service Center -used to adjust the 2nd stage according to Factory specs IDM.

### NEPTUNE SPACE REGULATOR ADAPTER

For technicians who set up and check Space mask regulators prior to mask assembly.

### NEPTUNE III REGULATOR ADAPTER

For technicians who set up and check Neptune III mask regulators prior to mask assembly.

### PORTABLE TEST BENCH

Portable test bench For OCEAN REEF IDM and conventional regulators.

### MIXER

This accessory allows For the connection between the M105 Digital/M105 Digital DC and an external amplifier or recorder.

The Mixer takes its power directly From the M105 and does not need a separate battery. Audio output cables are not included.



## IN ADDITION - OUR CUSTOM SERVICES

---

### BROADCASTING/ CONFERENCE CALL

Custom made systems For underwater live broadcasting, conference calls, audio & video, one way or 2-way communication (i.e. Skype calls!). Excellent For education, TV, shows, presentations, exploration etc.

### AQUARIUM AND SHOWS INSTALLATIONS

Custom made systems For wireless/hardwire communication between submerged personnel/ surface/ other. Connection to Facility amplification For public interaction (i.e. Scripps Aquarium).

## SPECIAL BUNDLES – AVAILABLE ACCORDING TO REGION

MODEL	SKU
LA PROJECT KIT <b>CLASS B PRODUCT</b>	OR023016

### LA project

advantages of uw communication on liveboards

A convenient bundle to have on your liveboard. The safest way of handling your diver guests is to be able to communicate with them.



For the larger vessel



For the tender boat



To communicate with conventional divers



For the Dive Guides

MODEL	SKU
B2D – BOAT TO DIVER	OR023015

### B2D KEY WESTDIVER RECALL SYSTEM

Warn your divers of hazards or weather changes.

- Recall the divers to the boat.
- Complete compatibility with all the OCEAN REEF product range.
- Suit up your boat with a professional, yet affordable diver recall set..

Read more about the M100 and the M101a units in this catalog.



watch the video

## SPECIAL BUNDLES – AVAILABLE ACCORDING TO REGION

---

### IDM SYSTEM

Choose your IDM of choice and bundle it with a First stage.

FIRST STAGE



IDM



## SPECIAL BUNDLES – AVAILABLE ACCORDING TO REGION

### PROFESSIONAL KITS

Choose your Professional Line IDM of choice and bundle it with a First stage and newest GSM Mercury UW Comm Unit.

FIRST STAGE



IDM



MERCURY



## SPECIAL BUNDLES – AVAILABLE ACCORDING TO REGION

---

### NEW G.DIVERS KITS

Choose your G.divers IDM and bundle it with a GSM G.divers UW Comm Unit and Extender Kit.



### INSTRUCTOR KIT NEPTUNE III

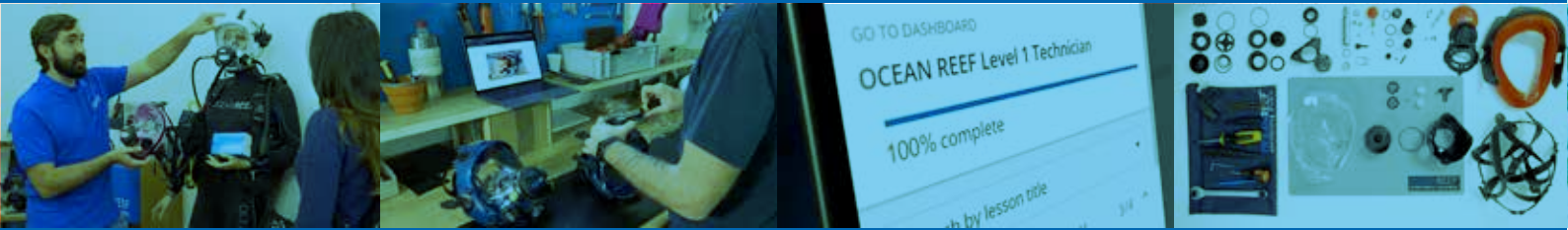
Choose your NEPTUNE III IDM of choice and bundle it with a GSM Mercury UW Comm Unit.

The best way to be ready to teach with the benefit of communication.

Be sure to check out our Neptune III Training Program.  
[diving.oceanreefgroup.com/training](http://diving.oceanreefgroup.com/training)



# OCEANREEF® Online School



Discover the new exciting platform built to learn everything you should know about OCEAN REEF products, their safe and correct use and much more!  
This platform is intended for OCEAN REEF Dealers, Technicians, Staff, Area managers and Scuba Professionals who seek deeper knowledge of our products.



Get the certification through your phone, tablet or PC.



Remote 1 on 1 support with an OCEAN REEF Technician Trainer.



Video instruction, quizzes and access to the courses to refresh learning.



Learn at your own pace and refresh your knowledge when you need.



You will get your own certificate ready to print after taking the online exam.



## Nemo's Garden: the first ever underwater cultivation of terrestrial plants.

---

Years ago Sergio Gamberini was enjoying his summer vacation in Noli, Italy.

Scuba diving has always been not only a business related activity, but a passion and a hobby deeply rooted inside him. Everything related to life in the ocean always has had a special place in his heart. His life could be described as constant hard working, Family and the ocean.

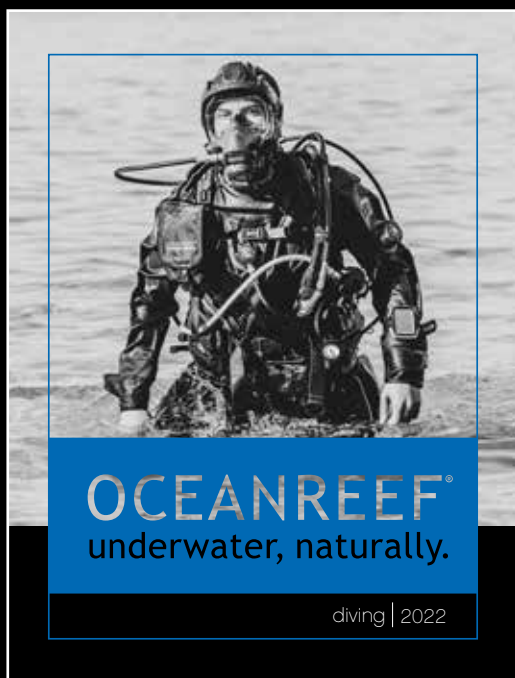
Find out more at [www.nemosgarden.com](http://www.nemosgarden.com)



watch the video

# OCEANREEF

invents, designs and produces equipment to be Fully at ease in  
discovering the underwater wonders



SinergicaDesign.it



'Reducing our footprint' choices – find out more

## OCEANREEF®

underwater, naturally.

**MESTEL SAFETY Srl**  
Via Arvigo, 2  
16010 Sant'Olcese  
Genova (Italia)  
Tel. +39 010 7082011  
Fax +39 010 7082099

**OCEAN REEF Inc**  
2510 Island View Way  
Vista, CA 92081  
Phone +1 760 744 9430  
Fax +1 760 744 9525  
Toll free 1 800 922 1764



Ocean Reef Group

**OCEANREEF**  
underwater, naturally.  
**SAFETY**

protection equipment  
engineering  
electronics



[snorkeling.oceanreefgroup.com](http://snorkeling.oceanreefgroup.com)  
[oceanreefgroup.com](http://oceanreefgroup.com)

